



DA DRAKE ASSOCIATES INC

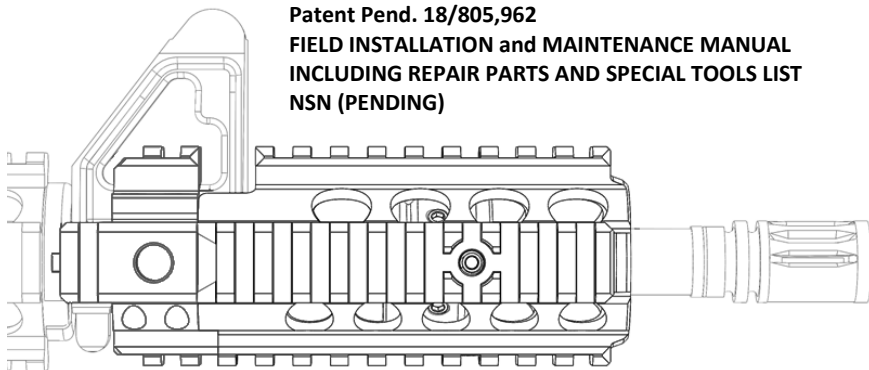
TECHNICAL MANUAL

DA Part Number: DA-DEFENDER-M4STB-MOD1
Defender M4 Modular Forend and Mounting System

CAGE CODE: 09HG8

Patent Pend. 18/805,962

FIELD INSTALLATION and MAINTENANCE MANUAL
INCLUDING REPAIR PARTS AND SPECIAL TOOLS LIST
NSN (PENDING)



COMPATIBLE FOR USE WITH

CARBINE, 5.56MM, M4, PN 9390000 NSN 1005-01-231-0973(EIC:4FJ); CARBINE,
5.56MM, M4A1, PN 12972700 NSN 1005-01-382-0953 (EIC:4GC); CARBINE, 5.56MM
AR15 (LAW ENFORCEMENT)

**PREPARED FOR DEPARTMENTS OF THE ARMY, AIR FORCE, NAVY, and US LAW
ENFORCEMENT AGENCIES**

REVISION DATED: APRIL 6, 2026

QR CODES FOR INSTALLATION VIDEO and INSTALLATION MANUAL -For additional reference
please see **INSTALLATION VIDEO** of the Defender Modular Forend Extension and mounting system.
QR Code below will provide the link to the video.

INSTALLATION VIDEO QR

TECHNICAL ASSEMBLY MANUAL QR



Engineered. Machined. Assembled. In the USA

OVERVIEW

The Drake Defender M4 Modular Forend Extension and Mounting System (Defender) is a US PATENT PENDING modular unit that allows present rifle systems to accept modern optics and accessories. The modular forend extension rail system will allow the operator to utilize larger accessories such as modern optics, accessory mounts, night vision devices, thermal or infrared devices, flashlights, laser systems, distance or ranging systems, as well as ergonomic features that enhance both the ability and ambidextrous capability of the rifle system.

TABLE OF CONTENTS

- Cover, Installation Video QR Code – Page 1
- Overview, Table of Contents, - Page 2
- Installation 1 - Manual and Parts Image / Packaged Kit Components – Page 3
- Installation 1 - Pre-Installation Special Notes on M4, M16 Pre-Existing or Issued Sling Swivel Points- Page 4
- Installation 1 - Mounting Block Assembly- Pages 5-6
- Quick Tip - Special Installation Note - Tool Warning – Page 7
- Installation 2 - Modular Forend Extension Reverse Taper Mount and Side Plates Pages 8–11
- Quick Tip – Modular Forend Extension Reverse Taper Mount “Bobbin” Revision – Page 11
- Installation 3 - Modular Forend Extension Tube – Pages 12-13
- Ancillary Equipment – Page 13
- Quick Tip - Using Sling Swivels - Page 14-15
- Disassembly, Hardware and Parts Control, Maintenance, Care and Cleaning - Page 16
- Assembly, Spare Parts / Components List and NSN’s – Page 17
- Technical Illustration – Page 18
- Warranty, Liability, DA Drake Notes, and Information – Page 19
- Armorer and Operator’s Notes Section and Point of Contact - Page 20

INSTALLATION MANUAL AND PARTS OVERVIEW IMAGE



INDIVIDUAL KIT PACKAGED COMPONENTS

Individual Kit Contents				
Qty.	Component	Material	Finish / Coating	Included Hardware / Notes
1 Ea.	Modular Forend Extension	6061-T6 Aircraft Aluminum With Stainless Steel Thread Fasteners Installed	Mil-Spec Hardcoat Anodized Type III Class 2	4 Ea. 1/4-28 x .250 in OAL Steel Cone Point Set Screws
1 Ea.	Barrel Reverse Taper Mount 'Bobbin'	4140 Ordnance Grade Steel	Hardened and Nitride Coating	4 Ea. 1/4-28 (.187" OAL) Stainless Steel Cone Point Set Screws
2 Ea.	Barrel Side Plates	4140 Ordnance Grade Steel	Hardened and Nitride Coating	
1 Ea.	Modular Mounting Base	6061-T6 Billet Aircraft Aluminum With Stainless Steel Thread Fasteners Installed	Mil-Spec Hardcoat Anodized Type III Class 2	
1 Ea.	Cap Sling Swivel Block	6061-T6 Billet Aircraft Aluminum	Mil-Spec Hardcoat Anodized Type III Class 2	4 Ea. 10-32 (.500") Low Profile Socket Head Cap Screws
1 Ea.	1/8 Hex Tool	Steel	Black-Oxide	Installation Tool
1 Ea.	3/32 Hex Tool	Steel	Black-Oxide	Installation Tool

PRE-INSTALLATION - SPECIAL NOTES ON M4, M4A1 and M16 PRE-EXISTING OR ISSUED SLING SWIVEL POINTS.

Cross Reference / See Installation Video 2:20-2:50

NOTE 1 - If your agency or unit was issued an M4 or M4A1, it may have a specific sling attachment as shown below in these images. This component must be removed before the Drake Defender M4 Modular Forend Extension and Mounting System can be installed. The Drake unit provides additional and enhanced slinging capability compared to what was furnished on your weapon. The images below identify the part that needs to be removed.



This part can be removed with an armorer's hammer, and punch set by tapping the roll pin out as shown (above photo) with red arrows in accordance with US Military armorers or Technical Manual (TM) 9-1005-319-23&P. See or refer to the actual US military Technical Manual.

NOTE 2 - If your weapon is a traditional M4, GAU5A or M16 with M4 step down barrel, polymer or plastic hand guards and configured with the standard bottom style sling attachment point, commonly found on this series. The removal of this sling swivel is optional. If you choose to remove this, please refer to Technical Manual (TM) 9-1005-319-23&P. An example of this is shown below.



INSTALLATION 1 - MOUNTING BLOCK ASSEMBLY UNIT

Cross Reference / See Installation Video 2:54.



The Modular Mounting Base for the Modular Forend Extension Kit - This part may be used as standalone or in conjunction with the complete Defender system. The mounting block and top cap have provisions for Picatinny rail compatible accessories that can be mounted at the 3,9 and 12 o'clock positions and have a Quick Detach (QD) sling Swivel base at the 3 and 9 o'clock positions. This portion of the installation requires the following parts of this kit:

Parts Needed Per assembly of this portion of the Kit:

- 1 Ea., Modular Mounting Base
- 1 Ea., Cap Sling Swivel Block
- 4 Ea., 10-32 (.500") Low Profile Socket Head Screws
- 1 Ea, 3/32 Hex Tool for 10-32 Low Profile Socket Head Screws
- 1 Ea, 1/8 Hex Tool for 1/4-28 Cone Point Set Screws
- Tools Required (Supplied by installer)
- Cleaner Lubricant Protectant Oil or Mil-Std Equivalent
- Torque Wrench (Inch Lbs.) with long shaft corresponding hex drives – Optional

SAFETY WARNING – BEFORE ANY INSTALLATION OF ANY COMPONENT OF THIS ACCESSORY OR COMPLETE SYSTEM: In a safe direction, the operator or armorer shall remove the feeding magazine, device, or other ammunition source; clear the weapon chamber; and physically and visually inspect the weapon to confirm it is empty. The operator or armorer shall render the weapon SAFE and EMPTY, with NO AMMUNITION present in the weapon or in the immediate workspace area and shall confirm that the weapon has an empty chamber and that the weapon selector or safety indicates "SAFE."

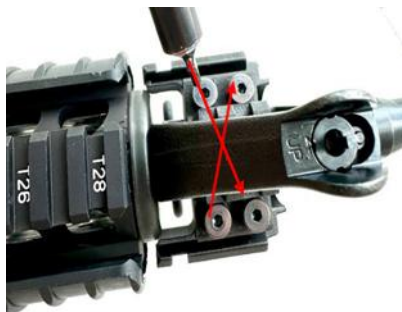
INSTALLATION 1 PROCEDURE

Optional Cross Reference / Installation Video 2:54.



Installation Procedures Start

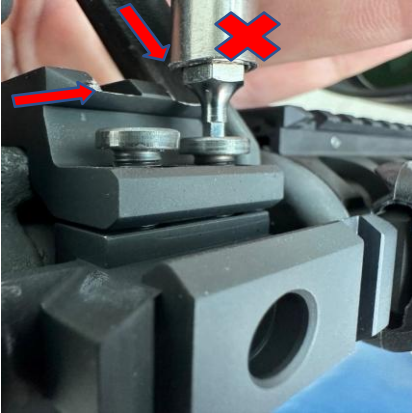
1. Press the Modular Mounting Base (Sling Swivel Mounting Base) into the space between the front and rear section of the Front Sight Post, with the tapered delta bosses or “teeth” facing toward barrel. This should fit snug within this area and fit with clearance for bayonet lug. Press up (see top left image).
2. Slide the Top Cap in between the “A” shape of the front sight post with the angled section facing the rear and with front section that has a flat forward leading edge. Press down (see top right image)
3. Install the 4 Ea., 10-32 Low Profile Socket Head Screws into the 4 positions. Using the 3/32 Hex tool, tighten in an “X” type pattern until the cap is tightened evenly, with the sides equally flush to the corresponding surfaces of the modular base block (sling Swivel Mounting Base) mounting system base. Torque Screws to 25 in-lb. (Bottom Left / Right Images)
4. When Installed Perform One Final Check – Visually check to make sure it is fitted properly. Physically check to make sure there is NO Forward to Rear movement and NO Lateral Rotation.



QUICK TIP - SPECIAL INSTALLATION NOTE - TOOL WARNING

Optional Cross Reference / Installation Video 6:05.

Pro Installation Tip - If you do not use a "long shaft" hex bit or Hex tool, YOU RUN THE RISK OF MARRING THE FINISH ON THE TOP "CAP" COMPONENTS OUTER EDGES.



- Use a long-shaft hex tool to ensure proper clearance between the tool and cap when tightening or removing the 10-32 low-profile socket head screws.
- A short-shaft hex bit will not provide adequate clearance and can mar the outer edges of the cap.
- This type of damage is cosmetic only and does not affect functionality; however, it is considered user-caused and is not covered under warranty.
- Always seat tool into the hex screw to full depth.
- Refer to the images: the incorrect short-shaft tool is shown on the left, and the correct long-shaft tool is shown on the right.

INSTALLATION 2 - MODULAR FOREND EXTENSION REVERSE TAPER MOUNT "BOBBIN" AND BARREL SIDE PLATES "CLAM SHELL"

Optional Cross Reference / Installation Video 6:46



This portion of the installation requires the following parts of this kit. Parts Needed for assembly of this portion of the Kit:

- 1 Ea. Modular Forend Extension with 4 Ea. 1/4-28 cone point set screws (1/4" / 0.250" OAL)
- 1 Ea. Barrel Reverse Taper Mount ("Bobbin") with 4 Ea. 1/4-28 cone point set screws (3/16" / 0.187" OAL)
- Note: The cone point set screws for the "Bobbin" are shorter in overall length than those used in the Modular Forend Extension
- 2 Ea. Barrel Side Plates ("Clam Shell"), forming an A & B component set
- Note: When assembled, these will not form a complete round shape; this design allows adjustment for undersized civilian "M4 step" barrels
- Tools Required / Recommended
- 1/8" hex tool for 1/4-28 cone point set screws (included in kit)
- Torque wrench (inch-lbs.) with long 1/8" hex drive (recommended)
- Loctite 243 Blue (medium strength) (recommended)

Pre-Installation Notes - The unit components such as the bobbin and barrel side plates have a specific coating to allow for protection of the barrel and components. This coating retains an oil film on the surface with similar technology to the Mil-Std barrel's approved coating. The parts should be oiled if dry. Parts will appear to have a light crystalline appearance over the finish when in need of oil. Please use CLP or Mil-Std weapons lubricant to achieve this additional protection.

Installation Steps – Once the parts are oiled and barrel surface is clean.

- 1) Slide the Barrel Reverse Taper Mount, "Bobbin," down the barrel to the Front Sight Post. NOTE: This part is OMNI-DIRECTIONAL and can be slid-on either way over the barrel. Let it rest on angle as shown to make clearance for next step. (see image Page 9)



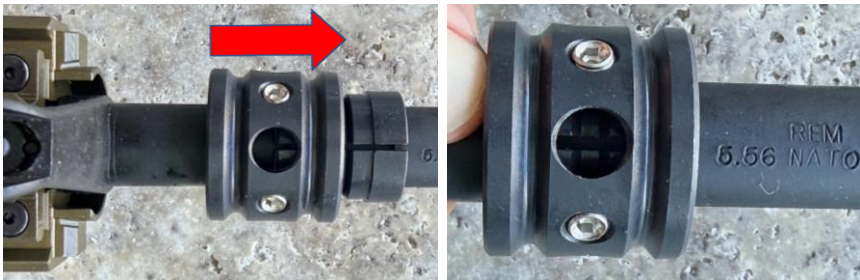
- 2) Apply Barrel Side Plates at the 3 and 9 o'clock positions on the M4 Barrel Step groove just forward of the front sight post, as shown in the pictures above. Be sure to align the tapered sections of the side plates so they face back towards the front sight post and align the sharp inner edges of the side plates over the sharp edge of the barrel step. These two halves are designed to be compressed within this area.



Pro Tip Note - For purposes of consistency, it is recommended to “time the split” in the Barrel Side. Plates “Clam shell” shown at the 6 and 12 o'clock positions, as shown in the upper pictures. You need to apply both side plates.



- 3) NOW Pull the Barrel Reverse Taper Mount "Bobbin," system forward (direction of arrow), over the Barrel Side Plates - make sure that the 1/4-28 (.187") Cone Point Set Screws in the "Bobbin" are backed out enough so it can slide over the side plates without interference.
- 4) VENT HOLES AND CONE POINT SET SCREW ORIENTATION — Pull the Barrel Reverse Taper Mount Unit ("Bobbin") firmly forward to seat it at its forward-most position, ensuring the side plates are properly shouldered against the 90° leading edge of the foremost barrel step. This confirms correct positioning. The unit contains four vent holes and four 1/4-28 cone point set screws (3/16" OAL). Viewed from above along the barrel centerline, align the vent (alignment) holes at the 3, 6, 9, and 12 o'clock positions, with the set screws offset at the 1:30, 4:30, 7:30, and 10:30 positions. Using a 1/8" hex tool, lightly tighten the set screws only until initial engagement is felt, as illustrated in the images. In the image below:



- 5) Using 1/8 Hex Tool, lightly tighten the 1/4-28 Cone Point Set Screws ONLY UNTIL you feel engagement.

ALIGNMENT HOLES and OFFSET - Re-check Timing of the Barrel Reverse Taper Mount "Bobbin" as shown and described as above. Make any adjustments, as necessary.

- 6) Using the 1/8 Hex Tool, NOW tighten the 1/4-28 (.187") Cone Point Set Screws (shown with RED arrows) **to 25 in-lb.** using a method and pattern similar to tightening 4 Lug Bolts as noted. The image above shows a tightening pattern as if you are looking down at the

barrel centerline from the muzzle end with the rifle behind it. Tighten with Equal Pressure and Equal Force.

- 7) The unit will lock down on itself, DO NOT OVERTIGHTEN. Once secure try to pull down / back the "Bobbin" and try to place lateral rotation. The device SHOULD NOT move or rotate.

QUICK TIP - CURRENT MODULAR FOREND EXTENSION REVERSE TAPER MOUNT "BOBBIN" REVISION

Optional Cross Reference / Installation Video 10:39

Bobbin Assemblies will feature a 4 ENLARGED Non-Threaded Alignment Holes for INDEXING ALLIGNMET – centered every 90 degrees. The larger holes are specifically designed for aid in low light to identify the difference between threaded smaller holes for the Cone Point Screws and the INDEXING ALIGNMENT holes.

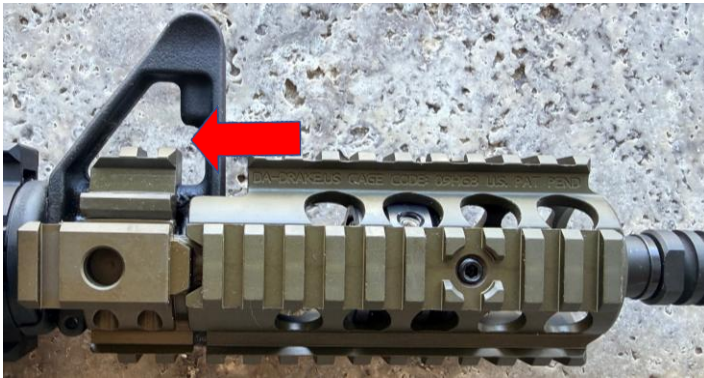


INSTALLATION STEP 3 – MODULAR FOREND TUBE EXTENSION

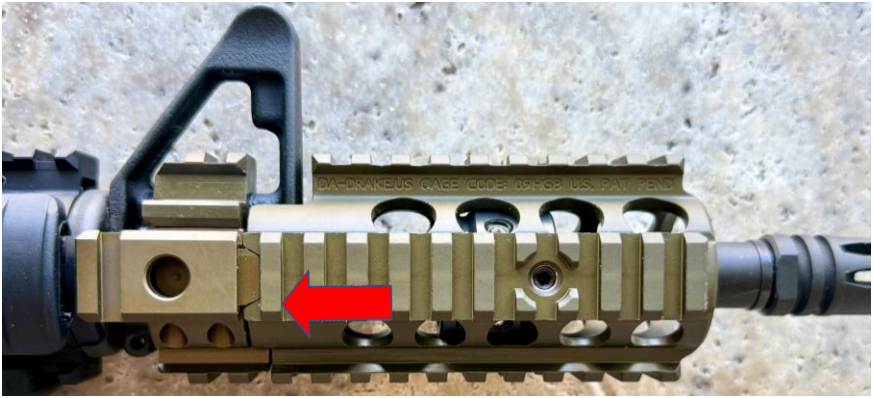
Optional Cross Reference / Installation Video 11:10



- 1) Inspect the interior cavity of the Modular Forend Extension before installation. Ensure all 1/4-28 (0.250" OAL) cone point set screws are threaded in and pre-positioned so the cone tips are flush with or slightly below the inner diameter, without protruding. This allows the extension to slide over the installed Barrel Reverse Taper Mount ("Bobbin").
- 2) Orient the Modular Forend Extension with the top rail at the 12 o'clock position (tallest rail with the shortest Picatinny section), then slide it over the barrel toward the Front Sight Post, aligning the side notches with the tapered delta bosses ("teeth") of the Modular Swing Swivel Base.
- 3) Close the gap, align the components, and interlock the mating surfaces with the Mounting Block Assembly. Press the Modular Forend Extension forward into the mounting grooves until a hand-tight fit is achieved.



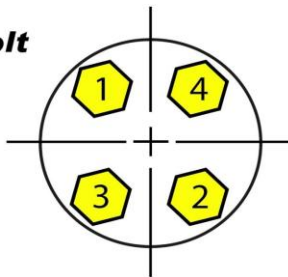
At the step shown in the image above, the Modular Forend Extension Assembly should be pushed towards the mounting base direction of arrow, to be fully seated on the Mounting Block Assembly with **NO tension applied** to the 1/4-28 Cone Point Set Screws at this time (See next image below).



NOTE: As the Cone Point Set Screws are progressively tensioned in the following step, the Modular Forend Extension Assembly will index inward toward the base block. The visible gaps (identified by the arrow in the image) between the base block and the Modular Forend Extension Assembly will gradually close and minimize as proper seating and alignment are achieved.

- 1) Next, using a 1/8 Hex, tighten each 1/4-28 Cone Point Set Screw, a HALF-Turn using the pattern shown below, to engage angular ramp of the “Bobbin”. Repeat the tightening pattern until resistance is met (i.e., screws are engaged on bobbin angular ramp).

4 Bolt



- 2) Tighten the pre-positioned 1/4-28 cone point set screws evenly in a four-lug alternating pattern to center the Modular Forend Extension on the barrel and bobbin assembly. Use 1/2-turn increments, rotating between screws until all are equally seated. Once aligned, torque each screw to 25 in-lb following the same pattern. When complete, the unit will be secure, properly centered, and resistant to rotation or movement.
- 3) When Installed Correctly, the Final Appearance of the assembly and access to all screws will be as shown above.
 - The Modular Forend Extension will have accessible Cone Point Set Screws at the 3,6,9,12 o’clock positions.
 - The “Bobbin” will have Cone Point Set Screws accessible at the 1:30, 4:30, 7:30, and 10:30 clock positions.

ANCILLIARY EQUIPMENT NOTE - Before installing ancillary accessories (e.g., lasers, illuminators, or night vision devices) for zeroing, it is recommended that the weapon be test fired to allow the system to settle and verify proper fitment of the Modular Forend Extension and Mounting System. This may be performed during the Zero Phase of an approved Course of Fire (COF). Following firing, inspect and re-torque all exposed fasteners to 25 in-lb.

QUICK TIP - USING SLING SWIVELS WITH DRAKE MOUNTING BLOCK ASSEMBLY

Optional Cross Reference / Installation Video 14:25



The mounting block assembly unit has 3 provisions for the use of Quick Disconnect (QD) sling swivel attachments orientated at the 3 and 9 o'clock positions of this mounting block. This gives the operator the ability to use any one of these locations to customize the operator's sling position based upon the operator's preference or for equipment loadout or mission profile.



FIG 1- Shown above, in "FULL" configuration with optional QD Sling Swivel attached.



FIG 2 - Shown above, in "FULL" configuration with optional QD Sling Swivel attached.

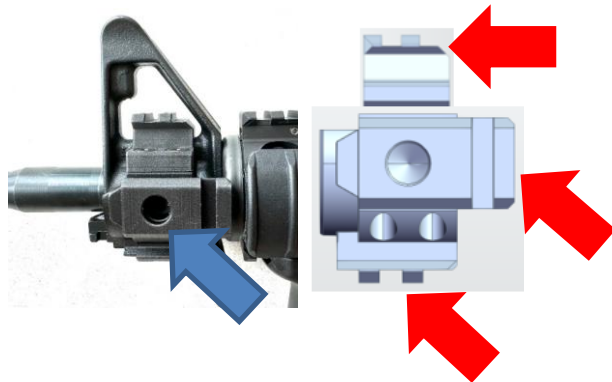


FIG 3 – “SLICK” Configuration

Shown in “Slick” or short configuration without the Modular forend assembly with Mounting base (Sling Operations Ready, Pending Sling attachment). The operator can use the small Picatinny rail at top cap or bottom for additional accessories (RED arrows) such as bottom broom handle or at top for 45 deg offset and Red Dot sight. Operator can install the QD Sling and Swivel (BLUE Arrow or see example in Fig 2) to side holes as directed by arrow on Right or Left side. Slick Configuration is bayonet compatible.

DISASSEMBLY / REMOVAL PROCEDURE (Simplified)

Optional Cross Reference / Installation Video 15:18

CAUTION: Perform all disassembly procedures on an unloaded firearm only. Verify the firearm is clear and safe prior to beginning removal. Remove the Modular Forend Extension Assembly by **reversing the installation sequence** described in this manual.

1. Loosen retention screws using the same alternating pattern used during installation.
2. Back screws out evenly to relieve clamping tension.
3. Ensure screws are backed out far enough to allow removal without forcing components.
4. Separate components carefully and remove the assembly from the host weapon.
5. **CAUTION:** Do not force components. Excessive force may damage mounting surfaces or threaded fasteners.

HARDWARE AND PARTS CONTROL

- Retain all screws and hardware during disassembly.
- Inspect hardware for damage prior to reinstallation.
- Verify that all components are accounted for before storage or reassembly.
- **NOTE:** Loss or damage of hardware may prevent proper reassembly and safe operation.

MAINTENANCE - Please service the weapon and its equipment in accordance with US Military Technical Manuals, Field or Maintenance Manual, Operator Manuals.

SERVICE	FIELD / MAINTENANCE MANUAL	OPERATOR MANUAL	AUTHORIZED WEAPON SYSTEMS (NSN / EIC)
ARMY	TM 9-1005-319-23&P	TM 9-1005-319-10	M16A2 – 1005-01-128-9936 (4GM) M16A3 – 1005-01-357-5112 M16A4 – 1005-01-383-2872 (4F9) M4 – 1005-01-231-0973 (4FJ) M4A1 – 1005-01-382-0953 (4GC)
USAF	TO 11W3-5-5-42	TO 11W3-5-5-41	M16 / M4 Series Weapons
USN	SW370-BU-MMI-010	SW 370-BU-OPI-010 Rev. 2	M16 / M4 Series Weapons
NOTE			References are cited as examples only. Use the most current and approved Technical Manuals (TM) or Operator Manuals (OM).

CARE / CLEANING

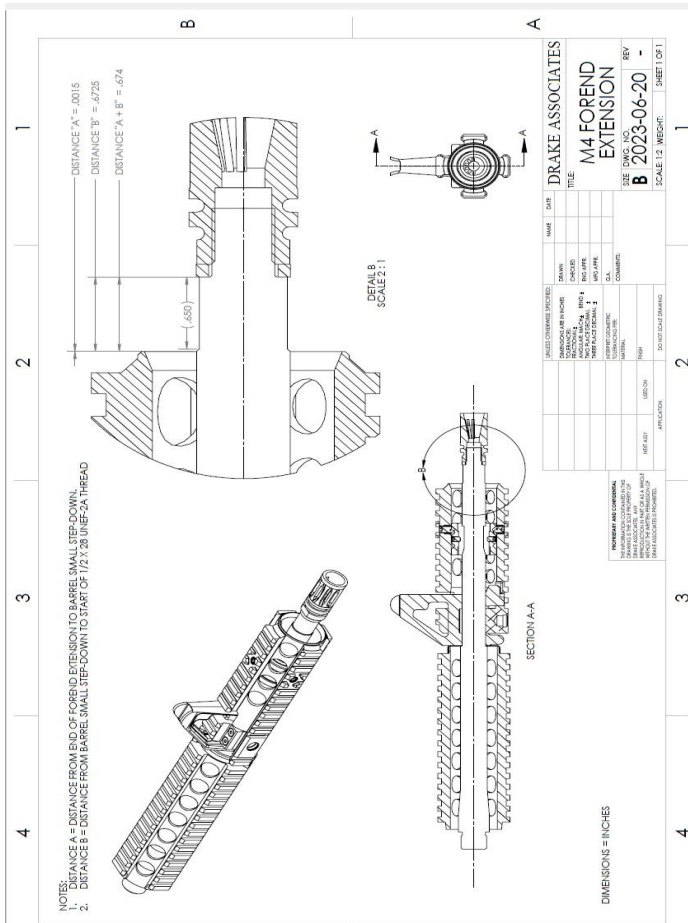
- Clean Rail and Sling Swivel Block with approved cleaning, lubricants, and protectants IAW TM or OM
- Internal parts and screws; Apply CLP on all parts, wipe excess lubricant off with dry towel.
- Dry Film Lubricant may be applied to all parts, EXCEPT screws.

COMPLETE & SPARE PARTS AND RELATED COMPONENTS

NSN	Part Number (P/N)	Item Name, Description	Required Ea.	Plg. Qty. Reorder Ex.
System as COMPLETE UNIT Listed Below				
	DA-DEFENDER-M4STB-MOD1-BLK DA-DEFENDER-M4STB-MOD1-FDE DA-DEFENDER-M4STB-MOD1-OD	Modular Forend Extension with Mounting Assembly Anodize Hardcoat – SPECIFY COLOR in Part Number BLK, FDE, OD	1	1
Parts listed below correspond to Installation Section 1 – Mounting Block Assembly				
	DA-M4STB-1001-BLK DA-M4STB-1001-FDE DA-M4STB-1001-OD	Top Cap Sling Block, Anodize Hardcoat, SPECIFY COLOR in Part Number BLK, FDE, OD	1	1
	DA-M4STB-1002-BLK DA-M4STB-1002-FDE DA-M4STB-1002-OD	Mounting Block (Modular Sling Swivel Base) Unit Body, Anodize Hardcoat - SPECIFY COLOR in Part Number BLK, FDE, OD	1	1
	92220A173	10-32 x 1/2 "(.500" OAL) Steel, Low Profile Socket Head Screws, Black-Oxide	4	100
Parts Below Correspond with Installation Section 2 – Reverse Taper Mount and Barrel Side Plates				
	DA-M4STB-2001	Barrel Reverse Taper Mount, "Bobbin," Unit Body, Color Black Nitride	1	1
	92785A449	1/4-28 x 3/16" (.187" OAL), Stainless Steel Cone Point Set Screws 18-8 Stainless,	4	100
	DA-M4STB-2002	Barrel Side Plates "Clam Shell," Color Black Nitride	2	1
Parts Below Correspond with Installation Section 3 – Forend Extension Tube Assembly				
	DA-M4STB-3001-BLK DA-M4STB-3001-FDE DA-M4STB-3001-OD	Drake Defender M4 Modular Forend Extension Assembly Unit Body, Anodize Hardcoat, SPECIFY COLOR in Part Number BLK, FDE, OD	1	1
	92695A311	1/4-28 x 1/2 (.250" OAL) Steel Cone Point Set Screw, Black-Oxide	4	100
Tools Included with Kit				
	7122A42	3/32 Hex Tool Alloy Steel Hex L-Key 3/32" Drive Size, Black-Oxide	1	10
	5503A18	1/8 Hex Tool Alloy Steel Hex L-Key 1/8 Drive Size, Black-Oxide	1	10
Recommended Optional Equipment				
	Commercial Part N/A	Sling Swivel QD (<i>*Optional Item not included, recommended - See notes Page 19</i>)	1	10
8040-01-576-4248	NSN or Commercial N/A	Loctite 243 Medium Strength Blue	1	UNK

TECHNICAL ILLUSTRATION AND NOTES

Demonstrates the Drake M4 Defender Modular Forend Extension and Mounting Block assembly configuration as shown with a current M4A1 barrel in 14.5" Length. Standard M4A1 Handguard shown to the rear of the front sight base in technical illustration.



Total Dimensions Assembled (approximate):

Length: 6", Width 2.2", Height 2.3" made to mirror profile of US Government issued M4/M4A1 Rail System. Installed Weight: 15 oz.

Note - Defender system is also compatible with the standard issue Oval or Round Handguards. Defender may not work with non-military or commercial / aftermarket handguard systems that wrap around and forward of the OEM handguard cap.

WARRANTY

All units are inspected prior to sale. Units are free from workmanship and defects for a period of a 1-year limited warranty from manufacturer's date of sale to customer or date of transfer to customer (whichever comes first) as per transfer records. Any defective component or part when inspected and determined to be defective within this period will be replaced.

Normal wear and tear associated with use of this are not covered. Damages, including cosmetics, associated with the use, improper assembly, abuse, neglect, improper maintenance, improper cleaning post various weather or environments, use of other equipment attached to same are not covered. Any end user or modifications made to the unit in whole or to any of components contained herein will immediately void the warranty. Damage to firearms, ancillary equipment, or property, personal property or bodily injury of any party as a result of this unit are not covered as well. Any consumer purchased, non-standard or replacement components installed post-initial delivery, or receipt will not be warranted as well.

Should a customer send in a unit that is not covered by the provisions of the 1-year limited warranty, DA Drake Associates Incorporated will advise the customer on the associated repair cost. If deemed that damages are outside of the provision of the warranty and not covered, shipping, handling, and insurance are not covered for product return as well.

LIABILITY

By accepting and using this equipment, the manufacturer assumes NO liability whatsoever for the assembly, use, misuse of this unit resulting in loss of life, property damage, or damage to host weapon and equipment. Damage to firearms, property, or bodily injury of any party including second, third or additional parties because of this unit are not covered as well. The manufacturer further assumes NO liability whatsoever as a result in a defect of the firearm itself manufactured that by the actual firearms manufacturer, or resulting from a problem arising with the weapons maintenance, improper or improperly installed ancillary equipment, or ammunition used, and or / user judgement, or use in any legal / illegal activity.

DA DRAKE ASSOCIATES INCORPORATED NOTES

Manual Images Disclaimer — Some of the images contained herein feature, as a host weapon, the Commercial/Civilian M4 equivalent (Non-NFA / National Firearms Act) with a 16-inch barrel, which shows a longer barrel protruding further forward than the typical 14.5-inch U.S. Military barrel. Both Commercial/Civilian (Non-NFA) and Military weapons share the same dimensional features, including the carbine-length gas system, and the areas for the M4 barrel cutout are identical except for the longer civilian barrel, which is the only item differentiating between the two upper units. (Shown on Page 14).

Please note that, depending on barrel length, the Commercial/Civilian (Non-NFA) 16-inch barrel will protrude farther from the forward-most leading edge of the Drake Defender Modular Forend device when assembled than the Military 14.5-inch barrel. Parts shown in this publication are for illustration purposes only. Some images may represent original polymer material testing versions used for fit testing of parts and may be shown in conjunction with actual production/working (aluminum) parts.

This document may include images of ancillary accessories or tool kits that are not part of this package.

Examples may include:

- Page 3,4,5 which shows parts of US DOD SOPMOD kit (broom handle, rail interface system or sling & mounts, etc.).
- Page 7, which shows common tools.
- Page 14 which shows a QD sling swivel.
- Page 18, which includes a parts list indicating a sling swivel as optional.

These items are not included and may be purchased independently or added at an additional cost.

This document may contain images of parts not in current military-issue configuration but that remain in circulation within Commercial, Civilian, or Law Enforcement use. For example, the original M4 forward sling point referenced on Page 4, bottom paragraph, Note 2, with image. In this publication, this component was left on the unit for illustration purposes only, as this product also supports commercial and U.S. Law Enforcement applications where the OEM sling point is commonly present in that location.

This document may contain proprietary information, in whole or in part, and may not be copied or duplicated without the written permission and consent of DA Drake Associates Incorporated.

DA Drake Associates Incorporated reserves the right to revise this manual and/or specifications for the product or associated.

ARMORER OR OPERATOR'S NOTES:

POINT OF CONTACT



PO Box 644332, Vero Beach, Florida 32964

(631)749-1100 Office / Customer Service

CAGE CODE: 09HG8

info@DA-DRAKE.us

www.DA-DRAKE.us

Engineered. Machined. Assembled. In the USA